

# Programs of Excellence (GIEP, MEX, Ken-X) Enrolment Guide for Year 7 in 2025



## Education for Life

# KENMORE STATE HIGH SCHOOL

# Kenmore State High School Programs of Excellence



## Ken-X Program

The Kenmore Extension Program (Ken-X) is a selective entry three-year program designed to engage and challenge our brightest young minds to be successful in a rapidly evolving future. Students undertaking this program have exposure to new and innovative learning experiences, and solve real-world problems with the aid of emerging technologies, viewed through the lens of self, community and the world. Learning experiences have a strong focus on STEM and are structured to support the development of the six 21<sup>st</sup> century learning competencies – critical thinking, creativity, communication, collaboration, character and citizenship.

## German Immersion and Extension Program

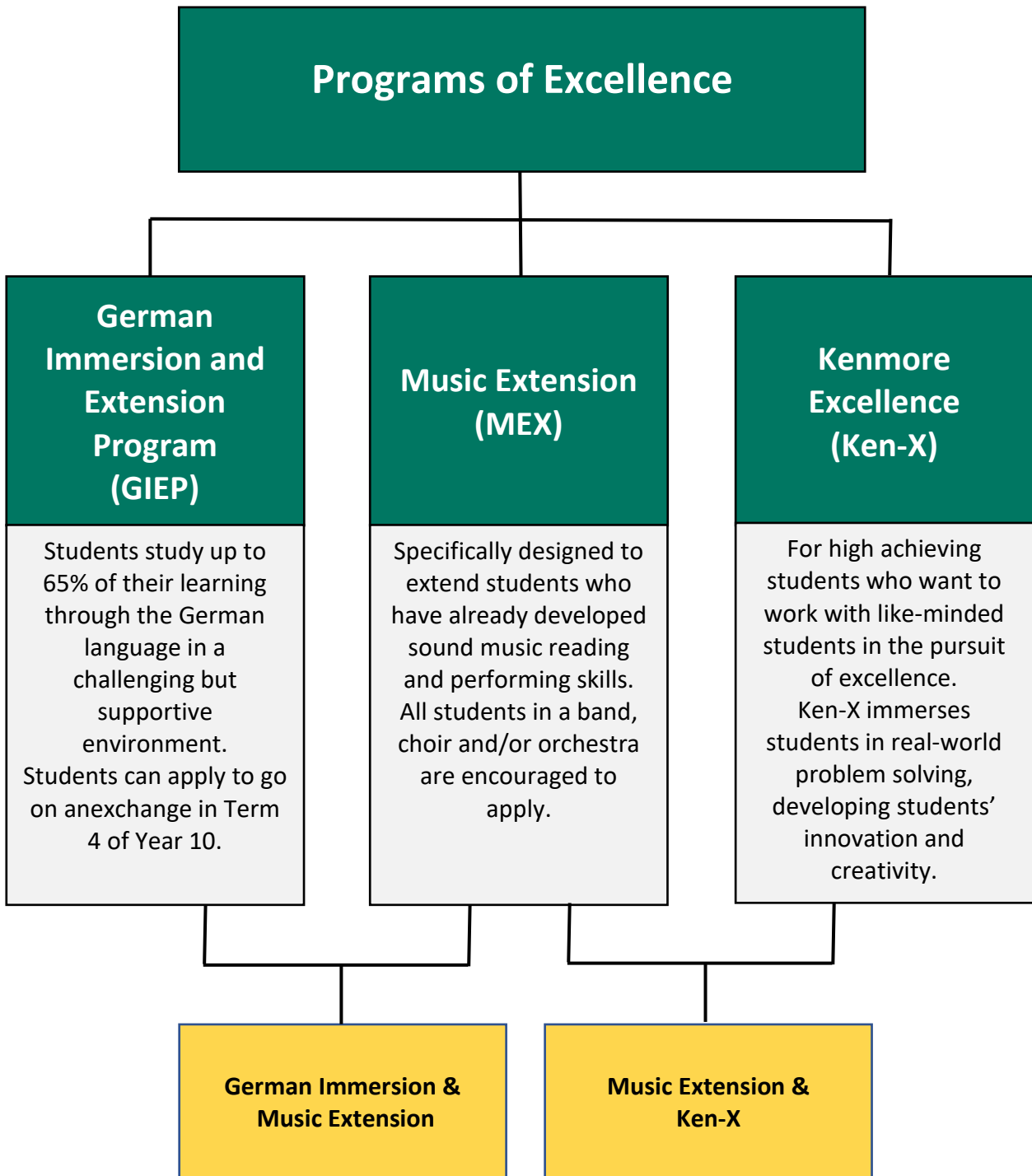
The German Immersion and Extension Program (GIEP) is a selective entry four-year program of academic excellence offering students a unique opportunity to become highly proficient in German. Students learn a number of subjects using German as the medium of communication, allowing students to challenge themselves academically while studying 65% of their program in the German language. In Year 10, students have the opportunity to spend a term at our sister school Engelsburg Gymnasium in Kassel, Germany. Students study the regular Year 12 German course in Year 11 and have the option to partake in the German Extension course in Year 12.

## Music Extension Program

Music Extension (MEX) is a selective entry program specifically designed to extend students who have already developed sound music reading and performing skills throughout the primary years of education. This exciting two-and-a-half-year program allows students to develop advanced skills, in a challenging atmosphere, with other like-minded musicians. Creative performance opportunities involve full class, small group and solo performances and students develop skills in a variety of instruments including guitar and keyboard, as well as voice.



# Programs of Excellence Flowchart



For more information about the school's Program of Excellence, visit:

[www.kenmorehs.eq.edu.au/curriculum/programs-of-excellence](http://www.kenmorehs.eq.edu.au/curriculum/programs-of-excellence)

## Frequently Asked Questions

Can I apply for more than one Program of Excellence?	Students can apply for more than one Program of Excellence. Refer to the Program of Excellence Flowchart to see which programs students can participate in.
How do I apply for a Program of Excellence?	To be considered for conditional entry in our Programs of Excellence, parents and students are required to complete the online Program of Excellence Application Form. Refer to the school's website for important documentation and dates.
Are there any application fees?	A non-refundable administration fee of \$200.00 applies for a Program of Excellence application. If applying for multiple programs, only one administration fee is required.
Can I accept a place in more than one program?	Students will only receive one offer into a program (this includes combined programs).
What happens after I accept a place in a Program of Excellence?	Students must attend Accelerate Program workshops in 2024 with dates and details to be provided to successful applicants, as well as attend an enrolment interview in Year 6 for Year 7 2025.
How is the timetable structure different from mainstream classes?	There is an excellent comparison of timetable structures at the front of the <i>Junior Secondary Curriculum Handbook</i> (available on the school's website). You will be able to compare across courses and with the mainstream timetable.
How many places are offered in Ken-X, MEX & GIEP?	Our Enrolment Management Plan (EMP) provides for up to two (2) classes of each Program of Excellence per year level.
If I am successful in securing entry into a Program of Excellence, am I required to attend the Accelerate Program?	Once you have accepted a position in our Program of Excellence your student will be invited to attend the compulsory Accelerate Program workshops during your Year 6. Dates and details will be provided to successful applicants at a later date.
I live outside catchment and haven't been offered a place in a Program of Excellence - can I still enrol?	Students not offered a place in an excellence program are welcome to apply for Year 7 enrolment.
Can I apply for entry into a Program of Excellence after the application closing date?	Applications received after the closing date will be placed on the waitlist and parents will be contacted only if positions become available.
Am I required to attend an interview?	All students are required to attend a Year 7 Enrolment Interview including those who have received an offer for conditional entry into a Program of Excellence. Enrolment interviews will be held on Saturday 1 June. More information will be provided to parents closer to the time.
Who do I contact if I need further information about Programs of Excellence?	GIEP – Ms Chrissie Geuthner (GIEP@kenmoreshs.eq.edu.au) MEX – Ms Jo Willett (MEX@kenmoreshs.eq.edu.au) Ken-X – Mr Daniel Robins (Ken-X@kenmoreshs.eq.edu.au)

# Programs of Excellence – Year 7 in 2025

Music Extension Program of Excellence Selective Entry (MEX)	
Live auditions, application and payment due date	Saturday 1 June 2024

German Immersion Program of Excellence Selective Entry (GIEP)	
Test bookings and payment due date	Wednesday 29 May 2024
30-minute Test date	Saturday 1 June 2024

Kenmore Excellence Program Selective Entry (Ken-X)	
Test bookings and payment due date	Wednesday 29 May 2024
1-hour Test date	Saturday 1 June 2024

Enrolment Interviews	
All students are required to attend a Year 7 Enrolment Interview on Saturday 1 June 2024 with all interviews to be held on this day. Bookings are essential.	
Bookings open	7:00am Monday 20 May 2024
Bookings close	7:00pm Wednesday 29 May 2024
Interview date	Saturday 1 June 2024
<b>Book your enrolment interview via</b> <a href="http://www.kenmoreshs.eq.edu.au/enrolments/enrolling-at-our-school">www.kenmoreshs.eq.edu.au/enrolments/enrolling-at-our-school</a>	

Please note that limited places remain available for Year 7 2025 Programs of Excellence given that applications have moved to Year 5 conditional entry. Students can still apply for 2025 (if currently in Year 6) for remaining places and testing will be conducted on enrolment day, Saturday 1 June for GIEP and Ken-X. Bookings to be made <http://eq.sobs.com.au/pt3/parent.php?schoolid=70659> MEX live auditions are to be held on Saturday 1 June 2024.

# Application Process – Year 7 in 2025

German Immersion	Music Extension	Ken-X
<p><b>Step 1:</b> Read the German Immersion brochure (on website).</p> <p><b>Step 2:</b> Download the Enrolment Application Booklet for Year 7 in 2025 (booklets available on the school’s website from May).</p> <p><b>Step 3:</b> Book an enrolment interview for Saturday 1 June 2024. This is the only available date for enrolment interviews and bookings are essential – refer to the Year 7, 2025 Enrolment Timelines. Allow 30 minutes before or after the interview for your student to complete a GIEP Entrance Questionnaire.</p> <p><b>Step 4:</b> Attend our pre-booked enrolment interview on Saturday 1 June 2024. <b>Bring the completed Enrolment Application Booklet for Year 7 in 2025</b> with all supporting documentation. Students are to attend a GIEP Entrance Questionnaire 30 minutes before or after their interview (last entry time in 2:30pm). Tests are booked on SOBS <a href="http://eq.sobs.com.au/pt3/parent.php?schoolid=70659">http://eq.sobs.com.au/pt3/parent.php?schoolid=70659</a></p> <p><b>Important Note:</b> If your student has already had a GIEP Entrance Interview and been offered a placement in 2025, you do not need to complete an Entrance</p>	<p><b>Step 1:</b> Read the Year 6 Music Extension (MEX) Audition Requirements for 2025 document (on website).</p> <p><b>Step 2:</b> Download the Enrolment Application Booklet for Year 7 in 2025 (booklets available on the school’s website from May).</p> <p><b>Step 3:</b> Book an enrolment interview for Saturday 1 June 2024. This is the only available date for enrolment interviews and bookings are essential – refer to the Year 7, 2025 Enrolment Timelines.</p> <p><b>Step 4:</b> Attend our pre-booked enrolment interview on Saturday 1 June 2024. <b>Bring the completed Enrolment Application Booklet for Year 7 in 2025</b> with all supporting documentation and attend the MEX live audition.</p> <p><b>Important Note:</b> Once your student has attended and enrolment Interview, completed their live audition and submitted supporting documentation, a panel will then meet to review applications. Notification will be provided to these audition applicants by email.</p>	<p><b>Step 1:</b> Read the Ken-X brochure (on website).</p> <p><b>Step 2:</b> Download the Enrolment Application Booklet for Year 7 in 2025 (booklets available on the school’s website from May).</p> <p><b>Step 3:</b> Book an enrolment interview for Saturday 1 June 2024. This is the only available date for enrolment interviews and bookings are essential – refer to the Year 7, 2025 Enrolment Timelines.</p> <p><b>Step 4:</b> Attend our pre-booked enrolment interview on Saturday 1 June 2024. <b>Bring the completed Enrolment Application Booklet for Year 7 in 2025</b> with all supporting documentation. Be sure to complete the Program of Excellence EOI indicating your intention to apply for Ken-X. Students are to attend an ACER test and Entrance Examination one hour before or after their interview. All components must be completed by 3pm. Tests are booked on SOBS <a href="http://eq.sobs.com.au/pt3/parent.php?schoolid=70659">http://eq.sobs.com.au/pt3/parent.php?schoolid=70659</a></p> <p><b>Important Note:</b> On the day of the enrolment interview, students who have applied for Ken-X will be asked to respond to two challenges. You will need to allow one hour before or after their interview to complete the</p>

Questionnaire at the enrolment interview.		ACER Test and Entrance Examination required for entry into Ken-X. Please note all components of the Ken-X interview and application process must be completed by 3:00pm.
<b>German Immersion &amp; Music Extension</b>		<b>Music Extension &amp; Ken-X</b>
<b>Step 1:</b> Follow the steps for GIEP as above.		<b>Step 1:</b> Follow the steps for Ken-X as above.
<b>Step 2:</b> Follow the admissions process for the Music Extension Program. Complete the MEX Audition and required supporting documentation.		<b>Step 2:</b> Follow the admissions process for the Music Extension Program. Complete the MEX Audition and required supporting documentation.
<b>Programs of Excellence enrolment applications close Wednesday 29 May 2024</b>		
<b>Please note:</b> A non-refundable administration fee of \$200.00 must be paid by Wednesday 29 May for Excellence Programs.		

## Methods of Payment

EFT		QKR! App	EFTPOS
<b>Account</b>	Kenmore State High School	(Download Qkr! – Register – Find our school – Register your children) Select menu – select child – select items - checkout	Payment Desk hours are 8.00am to 1.50pm
<b>BSB</b>	064-152		
<b>Account #</b>	0009 0103		
<b>Reference</b>	2025EXCEL Student Name		
<b>Any queries please contact Finance Team 3327 1503 or <a href="mailto:finance@kenmoreshs.eq.edu.au">finance@kenmoreshs.eq.edu.au</a></b>			

# Enrolment Timelines - Year 7 in 2025

<b>2024</b>	
<b>Open Day</b> <ul style="list-style-type: none"> <li>• School tours, subject and extra-curricular interactive stalls, enrolment information sessions</li> <li>• Register via the <a href="#">Open Day</a> webpage</li> </ul>	<b>Term 2, 2024</b> Week 5 - Saturday 18 May 2024 9:00am – 12:00pm
<b>Book an Enrolment Interview</b> <ul style="list-style-type: none"> <li>• All students need to have a Year 7 interview including those already accepted into a Program of Excellence</li> </ul> Book your enrolment interview via the <a href="#">Enrolling at our school</a> webpage	<b>Term 2, 2024</b> Bookings open 7.00am Monday 20 May 2024  Bookings close 7.00pm Wednesday 29 May 2024
<b>Enrolment Interviews</b> <ul style="list-style-type: none"> <li>• Getting to know your child</li> <li>• Enrolment documentation collected</li> <li>• Enrolment interviews available only on this date</li> <li>• GIEP &amp; KEN-X testing – limited places available</li> <li>• MEX live auditions – limited places available</li> </ul>	<b>Term 2, 2024</b> Week 7 - Saturday 1 June 2024 8:00am – 3:00pm
<b>In catchment &amp; previously accepted excellence programs offers</b> <ul style="list-style-type: none"> <li>• Mail out of letters confirming enrolment to in-catchment students</li> </ul>	<b>Term 2, 2024</b> Week 9 - W/b 10 June 2024
<b>Offers for specialist programs (Ken-X, MEX, GIP)</b> <ul style="list-style-type: none"> <li>• Acceptance/non-acceptance of these offers due 12<sup>th</sup> July</li> </ul>	<b>Term 2, 2024</b> Week 10 - W/b 17 June 2024
<b>Out of catchment offers</b> <ul style="list-style-type: none"> <li>• Mail out of letters confirming enrolment to in-catchment students</li> </ul>	<b>Term 3, 2024</b> Week 6 – W/b 12 August 2024
<b>Uniform Fittings &amp; Orders</b> <ul style="list-style-type: none"> <li>• Visits to alliance primary schools for fittings / orders</li> <li>• Also available at Kenmore SHS Uniform Shop</li> <li>• More information and dates available in primary newsletters late Term 3 2024</li> </ul>	<b>Term 4, 2024</b> Weeks 6 & 7
<b>Orientation Day</b> <ul style="list-style-type: none"> <li>• School tour</li> <li>• Getting to know classmates and teachers</li> <li>• Draft timetables distributed</li> <li>• Bus orientation</li> </ul>	<b>Term 4, 2024</b> Week 10 – Friday 6 December 2024 (TBC)

*Please note dates and times are subject to change. Please refer to the school's website for the most up-to-date information.*